

# H-Sense Infection Control

Entrance control solutions to limit the spread of infection



Infection control kit and entrance control series

**GUNNEBO®**







”

It is not the strongest of the species  
that survives, nor the most intelligent;  
it is the one **most adaptable to  
change**

- Charles Darwin

# H-Sense Infection Control Kit and Entrance Control Solutions

## Improve accessibility and limit risks of contamination

The world is going through unprecedented times due to the new coronavirus pandemic. The risks of infectious diseases and their capacity to spread have become very real and closer to home than ever.

Comprehensive new measures have been put in place all over the world with new concepts such as social distancing. We have all learned how to properly and frequently wash our hands or use sanitiser gel, how to wear and remove personal protective equipment (PPE), and have made it a habit to regularly check our temperature or any sign of contagion.

At the time of lockdown measures being eased and returning to work is being envisaged, the world can concur that a new normal will be established. As one of the first lines of defence in the workplace, the lobby or reception area will be at the forefront of adaptations considered to allow a safe return to work.

Gunnebo brings a family of infection control solutions to market, which aims to complement measures and advice already in place.

H-Sense solutions provide contactless and automated infection prevention and control functionalities. Integrated in the Gunnebo turnstile, they provide efficient and easy to implement infection control processes linked to the right of access to the building, ensuring that protective measures are properly and safely enforced.

H-Sense infection control kit can be selected for retrofit within existing Gunnebo entrance gates, as well as a complete solution for new installation within premises.

By screening employees and visitors, H-Sense models ensure the people and workplace are kept safe and healthy.







Temperature / fever detection



Face mask detection



Sanitiser gel dispenser



Social distancing single person detection



## H-Sense T - Infrared Body Temperature Detection

Automated thermal sensor for contactless temperature reading before access



One of the primary symptoms of individuals with an active infection is an elevated body temperature or fever. This temperature detection technology is synchronised with the gate operation, so the system will deny entry to individuals exhibiting an elevated body temperature above the normal range. This prevents the spread of such infections around your building at the point of entry.



H-Sense T's 7" display pod seamlessly integrated on the turnstile, combines image analytics and thermal detection to deliver high precision, contactless body temperature detection with a measuring range from 30 - 45°C and a precision of  $\pm 0.3^{\circ}\text{C}$ .

The H-Sense T provides peace of mind that anyone within the building would have been screened for a fever, and would have a normal temperature upon entry.



## H-Sense M - Hygienic Mask Detection

Ensure PPE hygienic masks are always worn before access

H-Sense M implements recommended infection prevention measures linked to the right of access. Located in a 7" display pod seamlessly integrated on the turnstile, a high precision camera backed up by image analytics, recognises whether or not the user is wearing a hygienic mask.

Automating the mask checks of personnel can lower the risks of pathogenic infection within the workplace; safeguarding both the wearer and the site population.



Integrated to the turnstile functionality it provides the ability to deny passage if a mask is not identified, thereby screening employees and visitors to mitigate the risk of spreading airborne infectious particles around your building. By automating the check of occupants wearing masks, both labour cost and the possibility of confrontation is reduced.





## H-Sense G - Sanitiser Gel Dispenser

Contactless gel sanitiser for cleansing hands prior to access



It is well documented that practising good hand hygiene is a critical factor in preventing the spread of infection, by minimising the opportunity for infectious agents and pathogens to be deposited on hard surfaces like doors and windows, particularly in communal areas.

H-Sense G combined with H-Sense T and H-Sense M, provides your building with a multi-faceted protection standard in order to safeguard all personnel.

H-Sense G features an automatic sanitiser gel dispenser linked to the turnstile functions of the gate, with mounting pole and glass barrier, that will administer a dose of hand sanitiser contactlessly and will not allow entry unless sanitiser has been administered.







# Three Levels of Protection

H-Sense kits and entrance control solutions provide three levels of health and sanitisation checks, ensuring the people who access the site do not display symptoms of illness, that they are wearing the correct personal protective equipment, and that they are sanitised prior to entry. Safety and health being the number one priority for the conscientious employer.

# H-Sense Entrance Control Solutions

## Integrated H-Sense entrance gate products

### Models

- **H-Sense** model features an integrated camera, infrared sensor and display with hygienic mask detection and user temperature check to deny entry to users if unprotected or showing signs of fever.
- **H-Sense+** model incorporates a pole-mounted sanitiser gel dispenser, in addition to the integrated camera and infrared sensor, to ensure that the users hands have been hygienically cleansed before being granted passage.



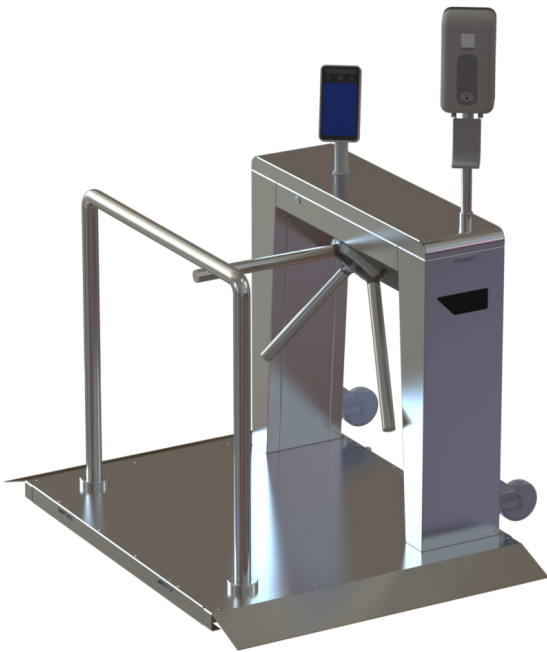
### Speedstile FLs H-Sense Speed Gate

Quiet and smooth operation for sites where limited space is required and aesthetics is important.

- User-friendly design
- Allows completely contactless entry
- Swing doors open in the direction of passage for optimum welcome effect
- Minimal footprint
- Tailgating and piggybacking detection
- Wrongway and intrusion detection
- Illuminated symbols
- Advanced user safety system







### Slimstile H-Sense Tripod Turnstile

Compact and cost-effective, these portable tripod turnstiles are suitable for internal or external areas when temporary solutions are required.

- Smooth and silent operation
- Fabricated from stainless steel
- Robust design
- Anti-backup device to prevent reverse rotation
- Drop arm option to allow free passage
- Normally closed or normally open configuration



### Speedstile FL H-Sense

Elegant swing door speed gates combining an effective barrier with a high flow rate.

- Sleek and aesthetically refined
- Allows completely contactless entry
- Swing doors open in direction of passage for optimum welcome effect
- Top lid LEDs to confirm or deny passage
- Customisation for bespoke design
- Tailgating and wrongway detection



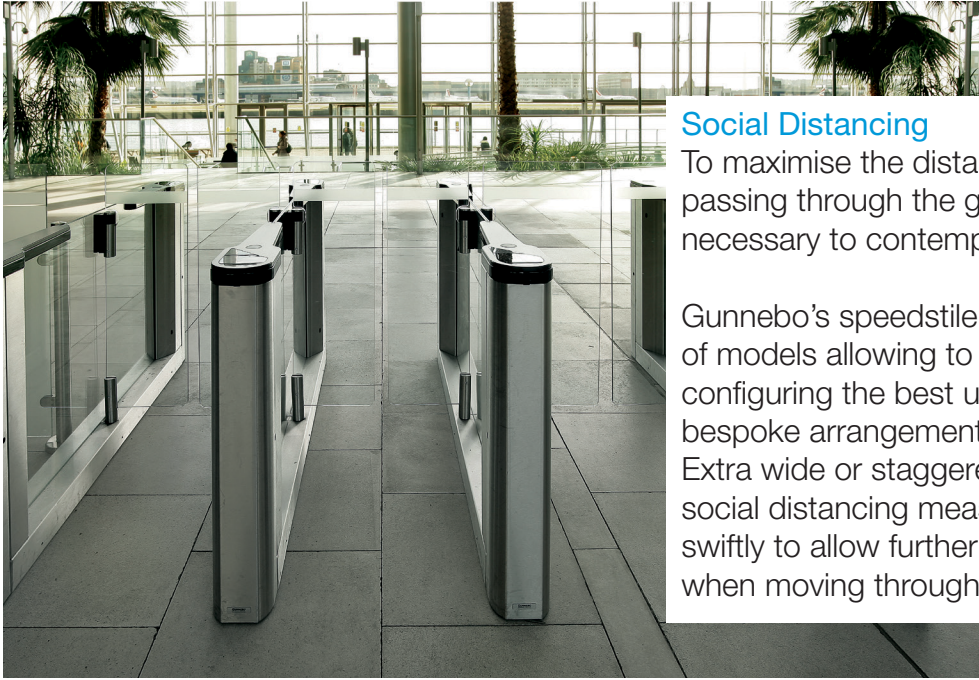
### Speedstile FP H-Sense

Retractable sliding door panel speed gates for sites requiring a high level of security.

- Modern and stylish design
- Allows contactless entry
- Full panel doors retract into unit
- Glass doors for transparency and reduces the appearance of barrier
- Illuminated flush mounted LED indicators
- Tailgating and wrongway detection
- Customisation for bespoke design

# Social Distancing Lane Layouts

Entrance control layouts to maximise health in the workplace



## Social Distancing

To maximise the distance between two agents passing through the gates at the same time, it is necessary to contemplate the lane layouts of gates.

Gunnebo's speedstile range offers a wide versatility of models allowing to position and structure gates, configuring the best use of available footprint, and bespoke arrangement for each site.

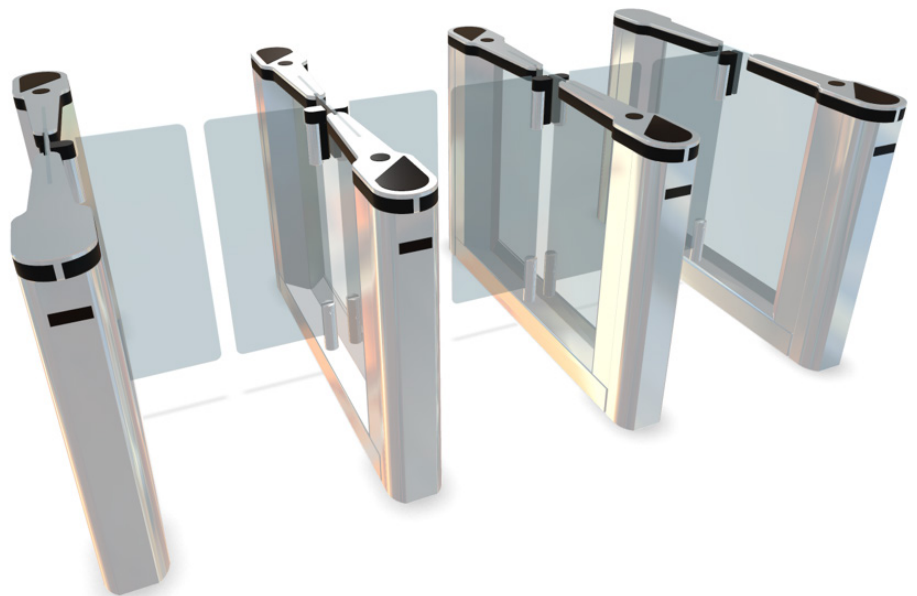
Extra wide or staggered lane layouts will assist in social distancing measures and can be implemented swiftly to allow further peace of mind to stakeholders when moving through entrance control.

## Traditional lane layout

The lane layout traditionally used in a linear design allows for the smallest footprint of a given space.

By placing each unit in line with one another, the layout of each gate is uniform and even, and allows each user to pass through alongside one another.

Social distancing efforts should be contemplated here, as the side by side approach does limit the space between two parties travelling through their respective gates at the same time.

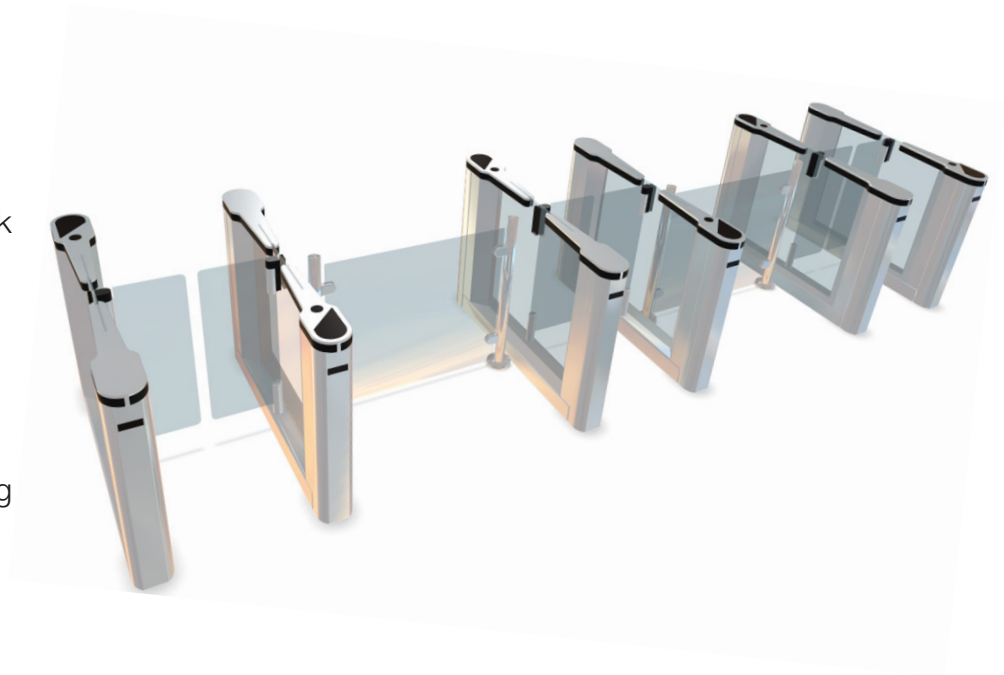




### Single lanes

As opposed to a traditional bank layout, individual lanes can be separated by bespoke barrier work to create the necessary social distancing separation between access points.

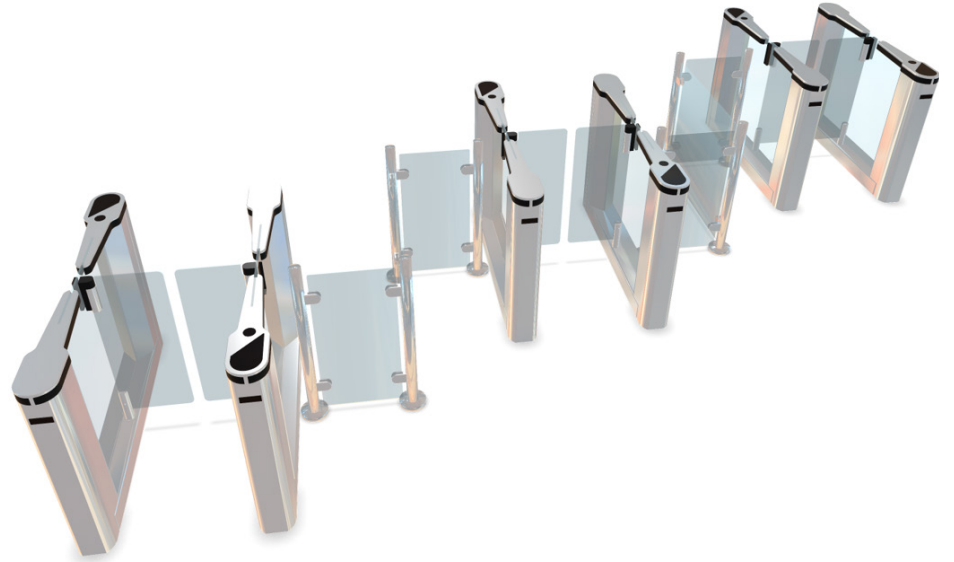
This layout optimises the balance between site footprint and the implementation of social distancing in the workplace.



### Staggered lanes

Lane staggering allows increased distance between users and can be configured if site footprint allows.

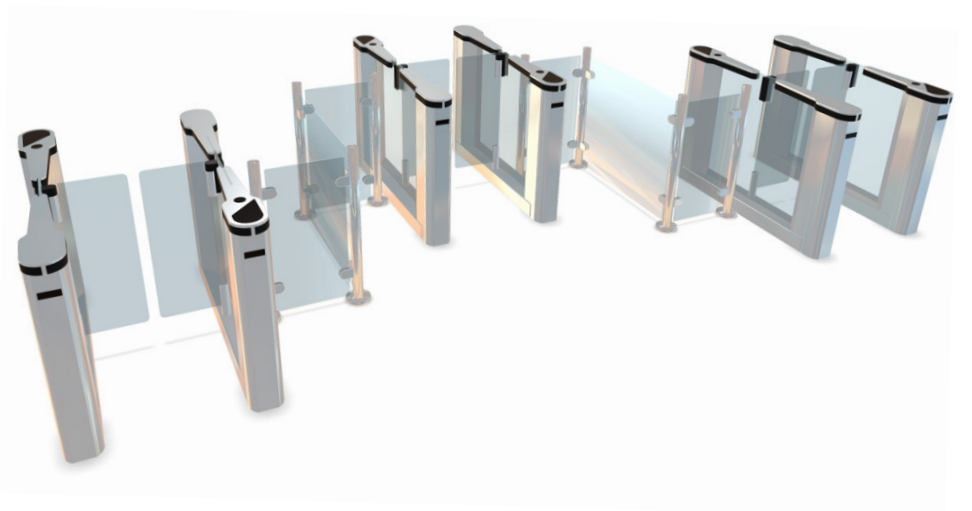
Staggered lanes will use a greater amount of space, but can be implemented in response to social distancing protocols. The layout permits more room between users passing through at the same time; also allowing users to exit and thereafter walk at staggered positions, maintaining their distance.



### Perpendicular lanes

Similar to staggered lanes, perpendicular lanes offer a novel solution to social distancing, but with a smaller footprint in mind.

Perpendicular lanes will provide more space between personnel as they pass through, whilst maximising the best use of the space allowed, should the footprint be limited in any way.



## Gunnebo H-Sense Kit and Series



Gunnebo Entrance Control Ltd  
The Gate House, Ashdown Business Park  
Michael Way  
Maresfield  
East Sussex  
TN22 2DU  
United Kingdom

[www.gunneboentrancecontrol.com](http://www.gunneboentrancecontrol.com)

**GUNNEBO®**