

 Fichet Bauche®

Millium Double Door

Cash Deposit & Transfer Safe



Certified
burglary
resistance



www.fichet-bauche.com

MILLIUM DOUBLE DOOR

Cash Deposit & Transfer Safe

Based on the Millium range, this double-door safe was designed specifically for cash transfers. It offers a wide choice of options to answer all types of installation requirements.

Key features

PROTECTION

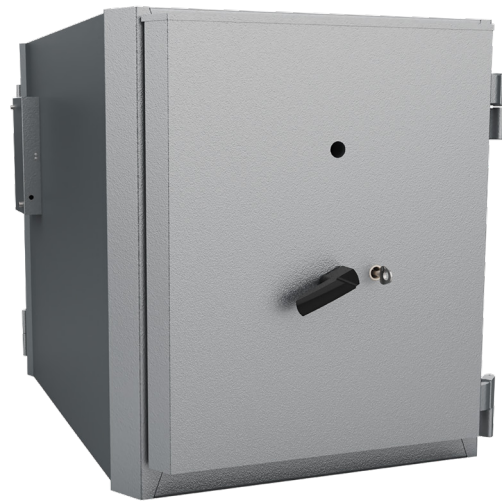
- ✦ Certified burglary resistance as per EN 1143-1 (Grade II).

CAPACITY

- ✦ 140 litres

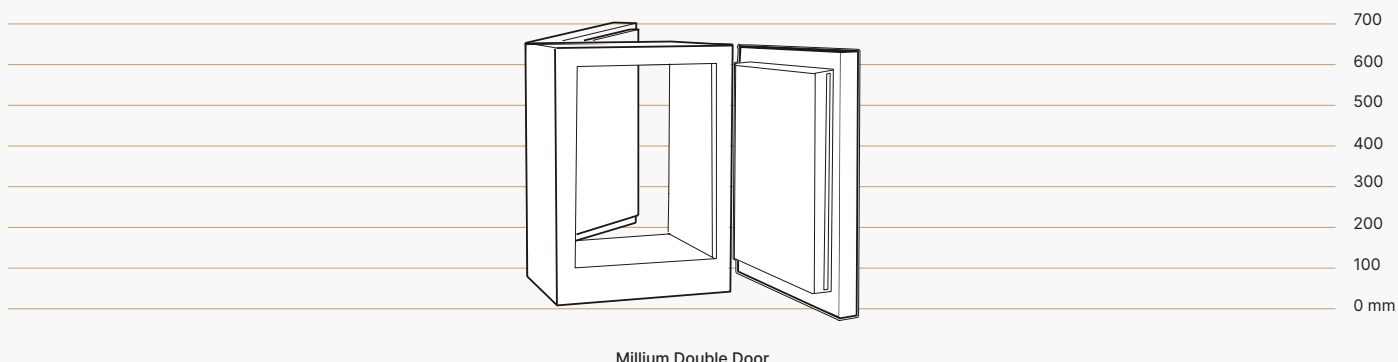
KEY BENEFITS

- ✦ Robust construction and high level of resistance to burglary.
- ✦ Wide choices of options to adapt to specific requirements.
- ✦ This product is not intended for outdoor installation and must be sheltered from weather conditions.



Fichet-Bauche guarantees

Our products are subjected to the most stringent tests approved by insurers and A2P-certified by France's National Centre for Prevention and Protection (CNPP). This is the result of integrating our own test laboratory into our factory to impose conditions going even further than those of certifying bodies. Installation is also carried out by our own technicians to ensure certification of your safe is always preserved.



Spécifications techniques

Models		MDD 140
Capacity (Litres)		140
External Dimensions (mm) <i>not incl. handles</i>	Height	615
	Width	555
	External width (door open to 90°)	595
	Depth	827
Internal dimensions (mm)	Height	525
	Clearance height (mm)	485
	Width	460
	Clearance width	410
	Clearance width (door open to 90°)	396
	Depth	578
Weight (kg)	Equiv. Grade I	364
	Grade II	363
	Equiv. Grade III	409
Number of doors		2

Notre serrure Fichet

A2P-certified lock as per European standards EN 1300:

✦ MxB key lock (patented by Fichet-Bauche)



MxB key lock
(patented by Fichet-Bauche)

A hallmark of our brand

With 200 years of experience as master locksmiths, we develop and manufacture our own exclusive locks. This is one of the key strengths of our safes and a guarantee of high security. We remain committed to permanent investment in R&D, always looking for more functionality, more resistance, new materials and more advanced lock technologies.

Product details

Millium Double Door (MDD) offers front doors with or without trap doors as per Article 3 of France's CIT Regulations. As an option, it also provides a metal base adjustable in height (note: this option is not compatible with Grade II certification). You may select right-hand or left-hand opening.

PERFORMANCE AND SECURITY

MDP safes provide:

- ✦ Burglary resistance as per EN 1143-1 certified by A2P (Grade II)
- ✦ Grade equivalence as per EN 1143-1 for Grade I/E and III/E models
- ✦ Plug & Play connections for master/slave configurations available as an option
- ✦ MxB key lock on both outer and inner doors
- ✦ Lagarde lock on the outer door as an option (note: this option is not compatible with Grade II certification)
- ✦ Optional factory-installed alarm configurations for remote lock management (DOCT sensors for shock and thermal opening detection)

INTERIOR FITTINGS AND OPTIONS

- ✦ Front door with trap door
- ✦ Adjustable base
- ✦ Plug & Play connections for master/slave configurations
- ✦ Anchoring kit included for safes weighing less than 1,000 kg (mandatory as per EN 1143-1 requirements).

